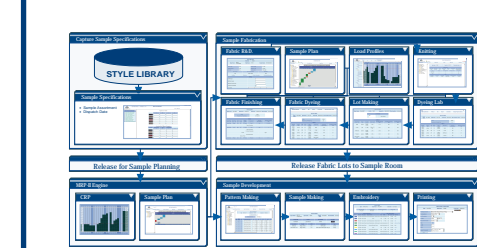
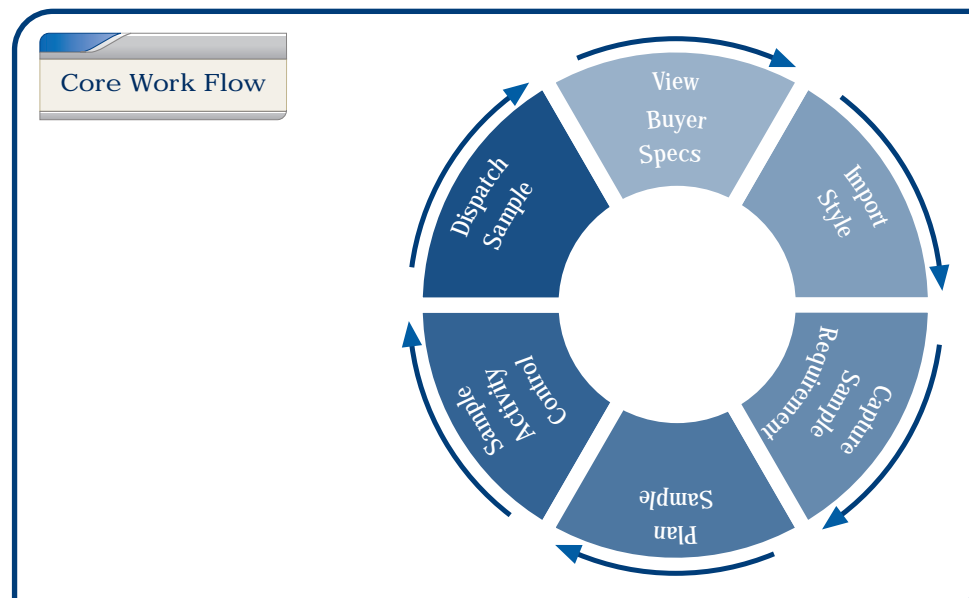
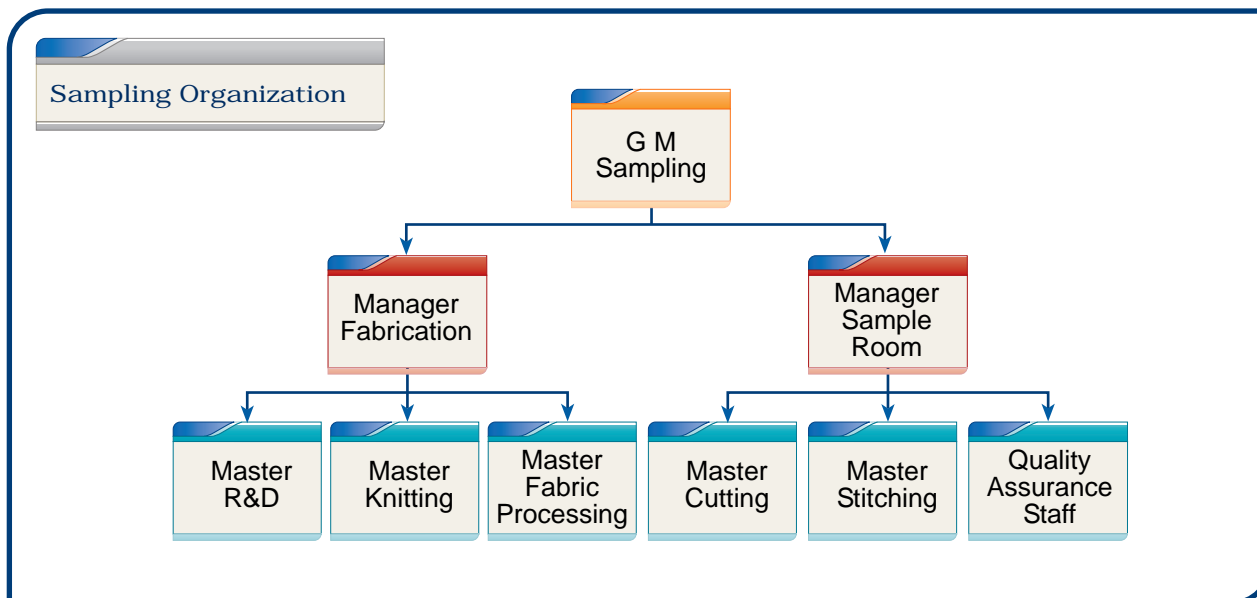
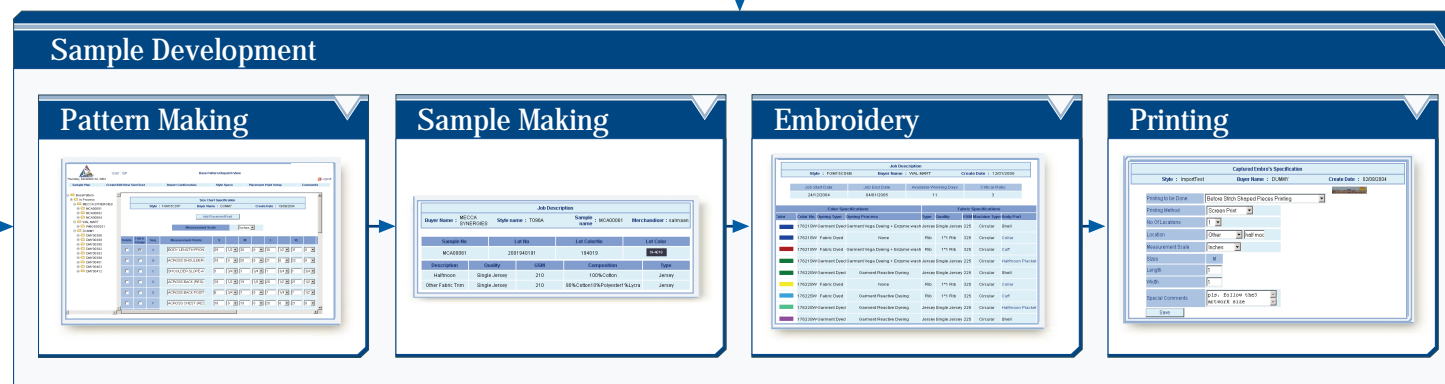
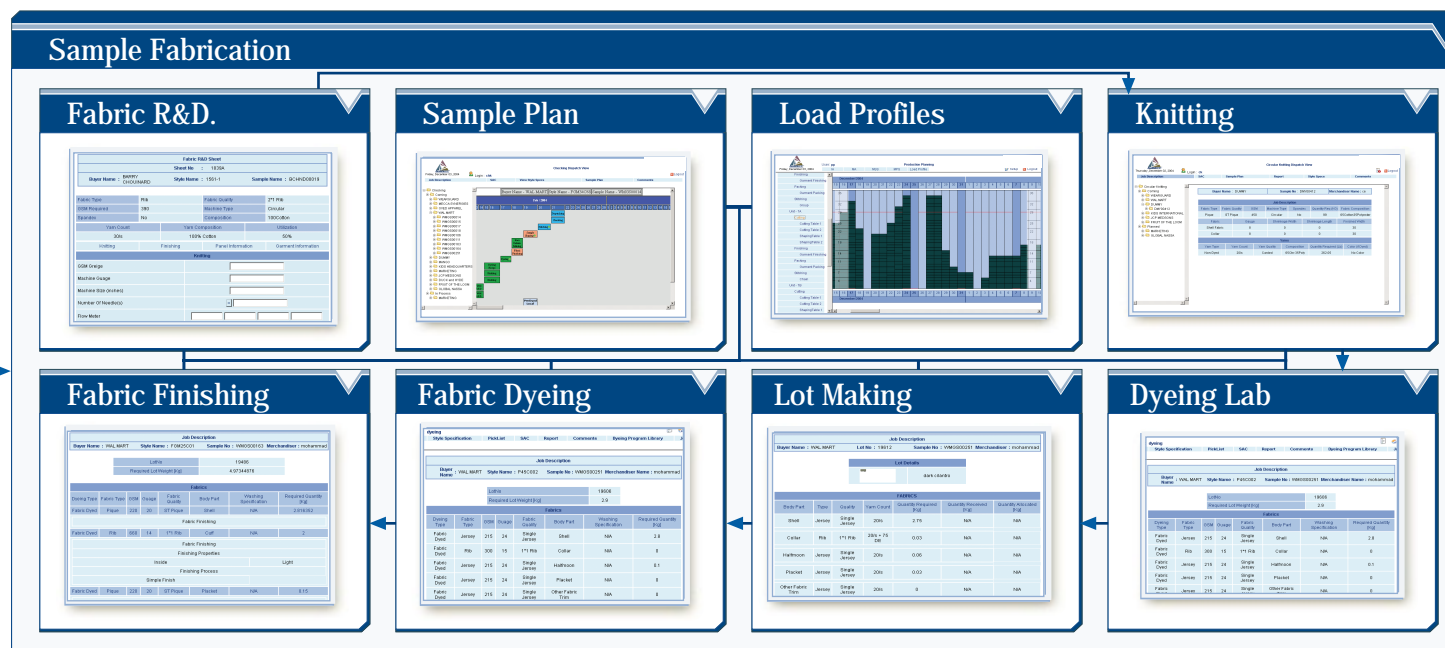
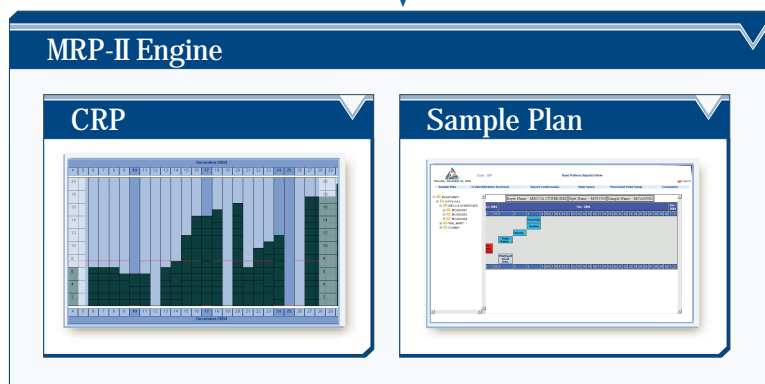
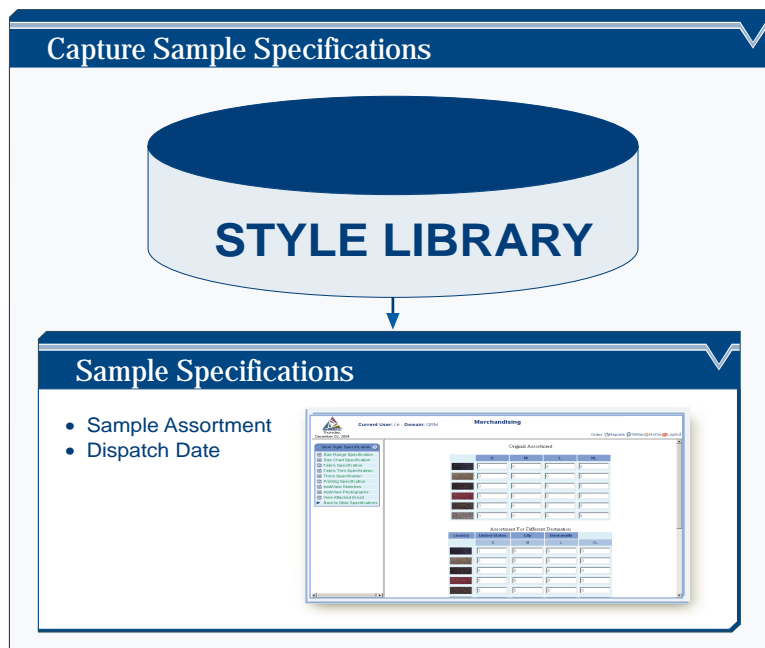


Algo ERP Release P-3



Merchandising

Value Statement

The P-3 contains this module especially to produce samples quickly and accurately. The module can handle Prototypes, size-sets, approval and salesmen samples in any quantity. It may even be used to create indigenous collections.

The module is generally owned and operated by marketing and production they set sampling targets, generate sampling requirements and monitor their progress till delivery of samples to buyers. Marketing managers use this module as a quick and reliable way to accomplish prototyping, salesman sampling and other marketing driven sampling tasks including producing proprietary collections. Production managers use this module to complete buyer specified sampling requirements such as top of the production, approval or pre-production

The sample planning with its MRP II planning logic calculates which work center involved in sampling should do what and when in order to complete a sampling task in the minimum possible time. Whereas the Capacity planning logic ensures that none of the targets given to the players exceed their available capacity. Sample planning works both with forward or backward planning logic.

Sampling Activity Control (SAC) is the execution arm of the sampling module. It facilitates the working of each player such as sample room, CAD/CAM, sample fabrication and printing and embroidery departments. It allows them to view their targets and job specifications. It also facilitates them to do perform their respective jobs and to report their completion to the system.

As a result, both marketing and production retain a perpetual view of the progress of sampling activities. Problems can be seen earlier, managers can therefore intervene quickly to avert them by re-planning the sampling targets and informing the buyers about modified schedules. Any modifications done to the styles during or after sampling are also used in updating the style specifications already stored in the database through capturing sub-module.